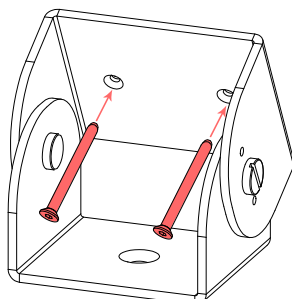


1.



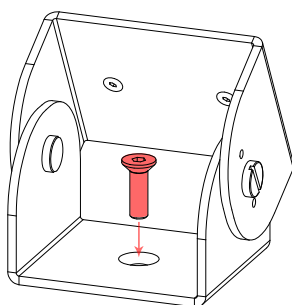
2.

1. Rimuovere il puntale del terminale in ottone in dotazione svitandola

1. Remove the ferrule of the brass terminal supplied by unscrewing it

2. Fissare l'elemento superiore al soffitto inclinato con le apposite viti.

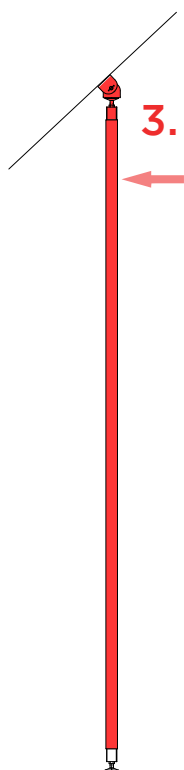
2. Attach the upper element to the sloping ceiling with the appropriate screws.



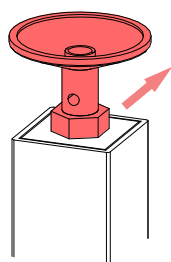
3.

3. Inserire il palo e bloccarlo al supporto di fissaggio a soffitto da sopra con la vite in dotazione.

3. Insert the pole and lock it to the ceiling mounting bracket from above with the screw provided.

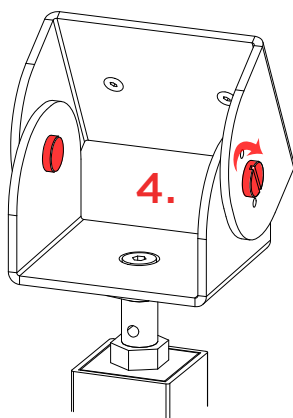


3.



4. Serrare le viti laterali.

4. Tighten the side screws.



4.